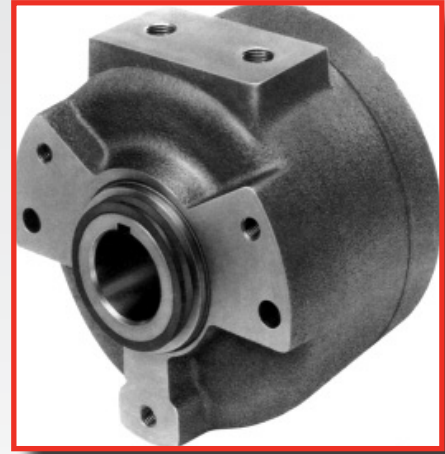
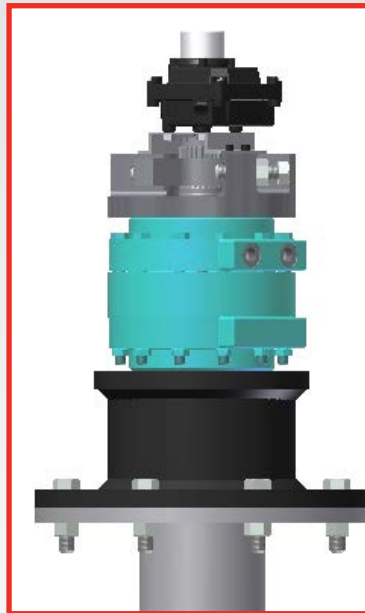
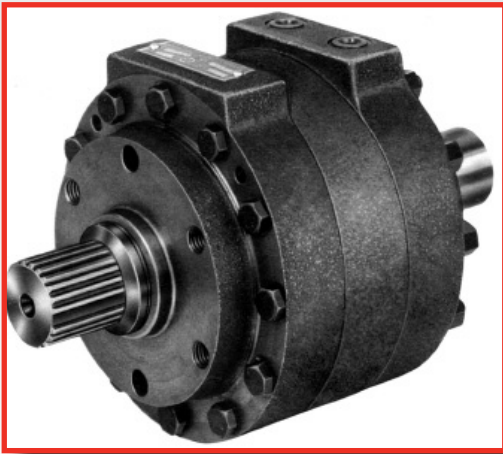




VALVE ACTUATORS FROM MICROMATIC LLC

525 Berne Street
Berne, IN 46711
260.589.2136
MicromaticLLC.com



AVAILABLE TODAY

ADAPTS EASILY TO MOST VALVES

DOUBLE VANE 100° ROTATION (±5°)						
MODEL	TORQUE IN-LBS (N•m)			VOLUMETRIC DISPLACEMENT IN ³ (cm ³)		APPROX. WEIGHT LB (Kg)
	1000 PSI (69.0 BAR)	2000 PSI (137.9 BAR)	3000 PSI (206.9 BAR)	PER 100°	PER RAD	
	SS-.2A	—	—	—	—	
SS-.5A	810 (91)	1620 (183)	—	1.57 (25.73)	.90 (14.75)	3.2 (1.45)
SS-1	2280 (257)	4560 (515)	6840 (773)	4.18 (68.51)	2.40 (39.33)	22 (10)
SS-4	7230 (817)	14460 (1634)	21700 (2452)	13.29 (217.82)	7.62 (124.89)	50 (23)
SS-8	15200 (1718)	30400 (3435)	45600 (5153)	27.92 (457.60)	16 (262.24)	80 (36.29)
SS-12	23660 (2673)	47320 (5347)	70965 (8019)	43.45 (712.14)	24.90 (408.11)	125 (57)
SS-25	47310 (5346)	94620 (10692)	141930 (16038)	86.41 (1416.31)	49.80 (816.22)	230 (104)
SS-40	76000 (8588)	152000 (17176)	228000 (25764)	139.61 (2288)	80.00 (1311)	370 (168)
SS-65	123500 (13955)	247000 (27911)	370500 (41866)	226.87 (3718)	130 (2130)	582 (264)
SS-130	247000 (27911)	494000 (55822)	741000 (83733)	453.75 (7436)	260 (4261)	1035 (469)

DOUBLE VANE 100° ROTATION (±5°)						
MODEL	TORQUE IN-LBS (N•m)			VOLUMETRIC DISPLACEMENT IN ³ (cm ³)		APPROX. WEIGHT LB (Kg)
	1000 PSI (69.0 BAR)	2000 PSI (137.9 BAR)	3000 PSI (206.9 BAR)	PER 100°	PER RAD	
	HS-1.5	—	—	NA	—	
HS-2.5	—	—	NA	—	—	—
HS-4	—	—	NA	—	—	—
HS-6	12080 (1365.04)	24170 (2731.21)	36250 (4096.25)	22.20 (363.86)	12.72 (208.48)	68 (30.84)
HS-10	18120 (2047.56)	36250 (4096.25)	54370 (6143.81)	33.29 (545.62)	19.08 (312.72)	76 (34.47)
HS-15	28500 (3220.50)	57000 (6441.00)	NA	52.70 (863.75)	30.02 (492.03)	95 (43.08)

- Custom engineered interfaces
- No torque limit on custom units
- Precision positioning
- High frequency modulation
- Up to 280° of rotation with single vane actuators



PLACE YOUR ORDER

Dan.Thompson@MicromaticLLC.com
(260) 706-3100
Nick.Skaggs@MicromaticLLC.com
(260) 418.8585

