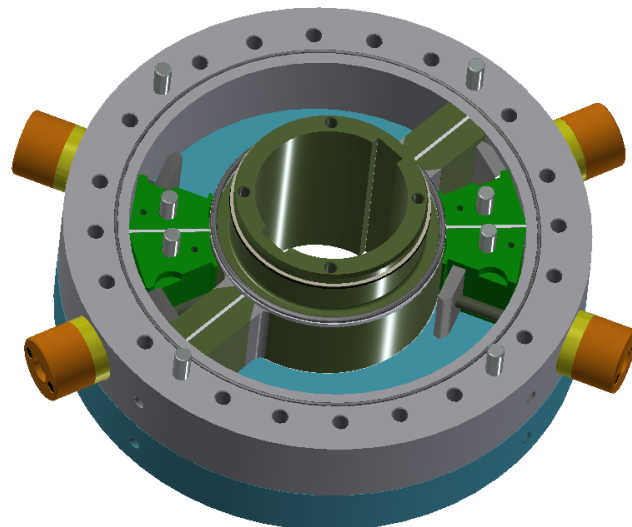
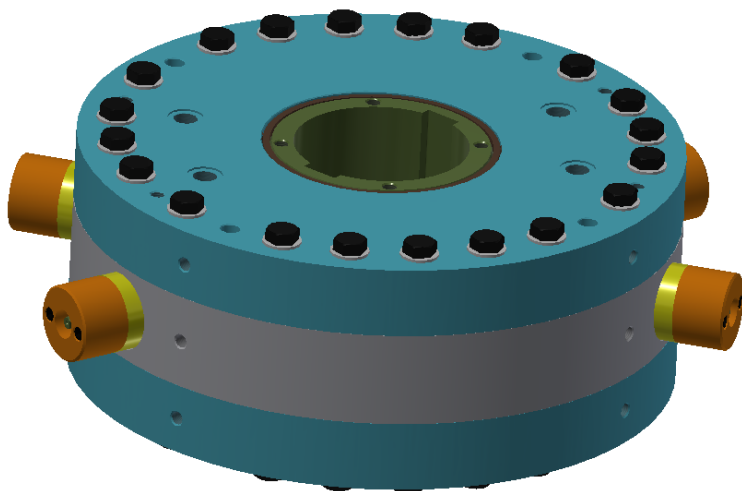


HYDRAULIC VALVE ACTUATORS FROM MICROMATIC LLC

525 Berne Street
Berne, IN 46711
260.589.2136
MicromaticLLC.com



**CAN BE CUSTOMIZED TO FIT
YOUR EXACT VALVE TYPE**

STANDARD ISO FLANGES

International Standard ISO 5211		3000 psi Max. Operating Pressure				1,500psi Operating Pressure
Flange Type	Flange Type Torque Range (in-lbs.)	Micromatic Model	Volumetric Displacement (in ³ /Radian)	Body Bore Dia. X Body Height	Maximum Torque @ 3,000psi	Maximum Torque @ 1,500psi
FXX	0 - 70,800	Lower Torque Units also available				
F30	70,800 – 141,600	HS-050-2V	50	13 x 2	141,600 in-lbs.	70,800 in-lbs.
F35	141,600 – 283,200	HS-100-2V	100	15 x 3	285,000 in-lbs.	142,500 in-lbs.
F40	283,200 – 557,550	HS-200-2V	200	17 x 5	570,000 in-lbs.	285,000 in-lbs.
F48	557,550 – 1,106,250	HS-400-2V	400	20 x 7	1,114,000 in-lbs.	557,000 in-lbs.
F60	1,106,250 – 2,212,500	HS-800-2V	800	25 x 9	2,280,000 in-lbs.	1,140,000 in-lbs.
FXX	N/A	HS-1600-2V	1,600	30 x 13	4,560,000 in-lbs.	2,280,000 in-lbs.

- Highest torque in the smallest footprint
- Actuator fits right to valve flange for the lowest stack height
- Precision positioning with adjustable stops
- No torque limit on custom units
- Each actuator can accommodate several valve sizes



PLACE YOUR ORDER

David.Coffee@MicromaticLLC.com 260.414.5964

